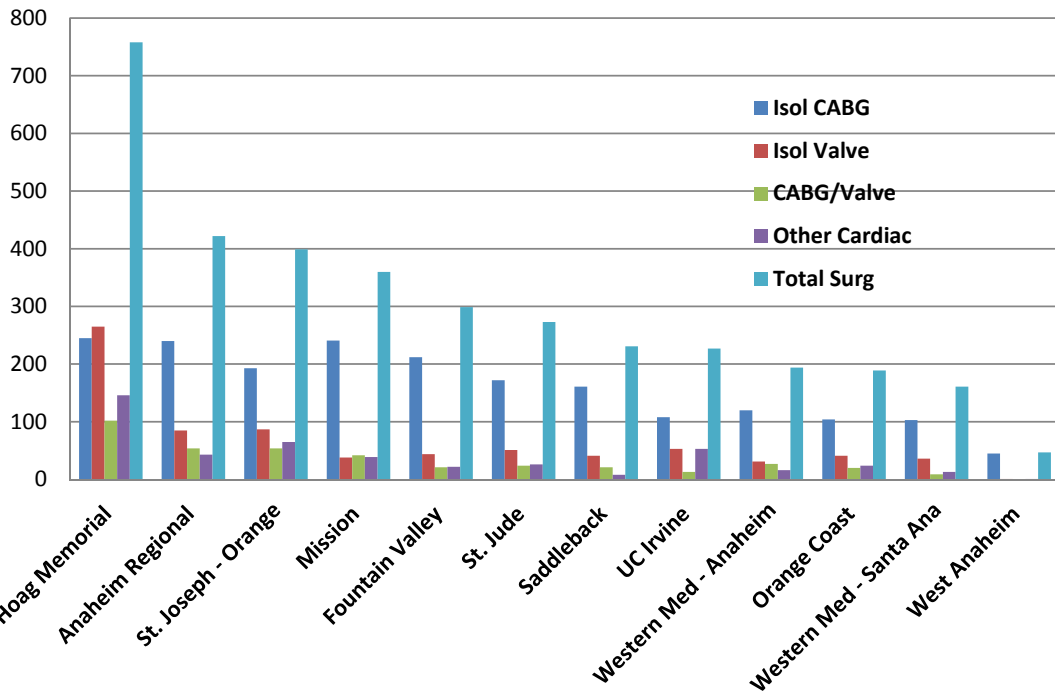


Cardiac Surgery Orange County CA Jan2011-Dec2012



| Hospital | Isol CABG | Isol Valve | CABG/Valv | Other Cardiac | Total Surg |
|-------------------------|-----------|------------|-----------|---------------|------------|
| Hoag Memorial | 245 | 265 | 102 | 146 | 758 |
| Anaheim Regional | 240 | 85 | 54 | 43 | 422 |
| St. Joseph - Orange | 193 | 87 | 54 | 65 | 399 |
| Mission | 241 | 38 | 42 | 39 | 360 |
| Fountain Valley | 212 | 44 | 21 | 22 | 299 |
| St. Jude | 172 | 51 | 24 | 26 | 273 |
| Saddleback | 161 | 41 | 21 | 8 | 231 |
| UC Irvine | 108 | 53 | 13 | 53 | 227 |
| Western Med - Anaheim | 120 | 31 | 27 | 16 | 194 |
| Orange Coast | 104 | 41 | 20 | 24 | 189 |
| Western Med - Santa Ana | 103 | 36 | 9 | 13 | 161 |
| West Anaheim | 45 | 1 | 0 | 1 | 47 |